

Simple One

The radiator has a built-in ONE heating element.

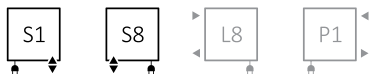


Colour included in the price

design: Przemysław Jan Majchrzak

Connections:

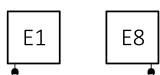
A ↓ 480÷1920:



A ↓ 720÷1920:



Electric radiators:

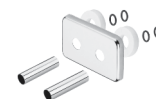


We recommend:

A set of integrated thermostatic valves with immersion tube for S1 and S8 connections



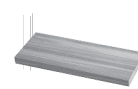
Integrated pipe-masking set



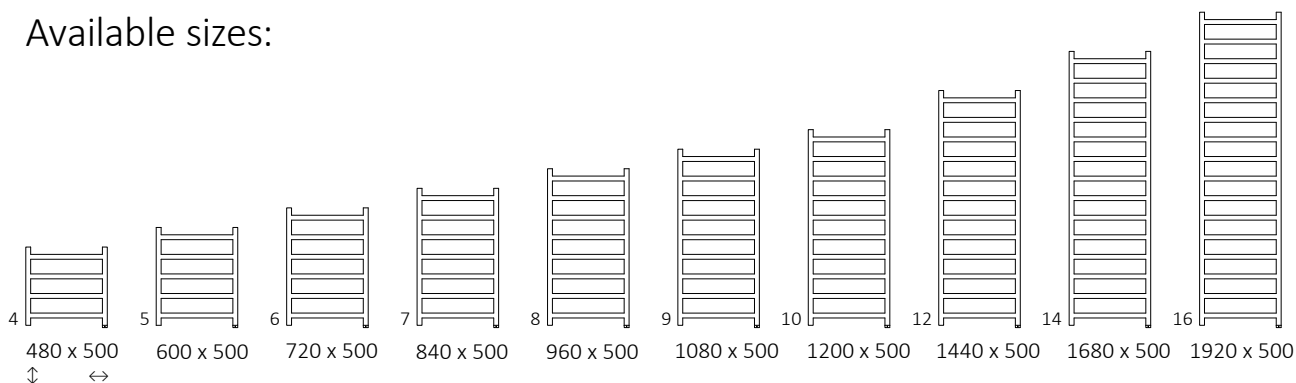
SIMPLE hanger



SIMPLE shelf



Available sizes:



Specifications:

Working pressure: 1,0 MPa Maximum operating temperature: 82°C

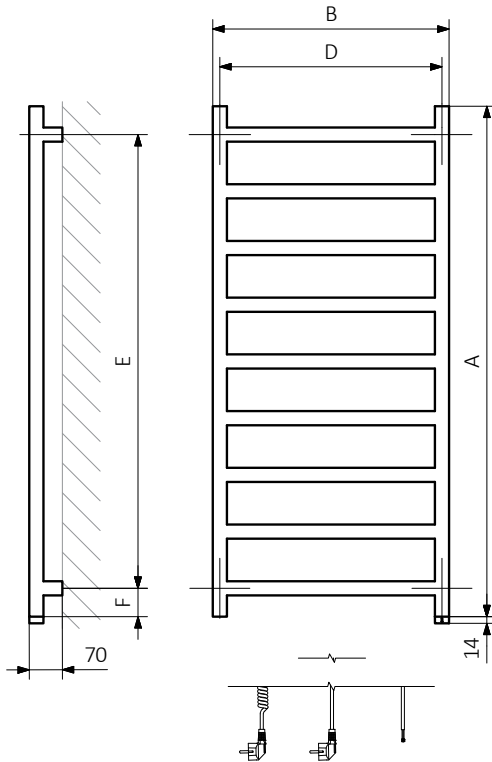
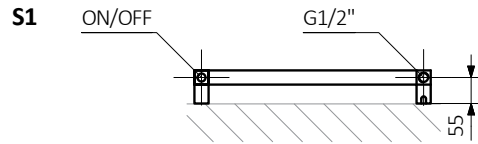
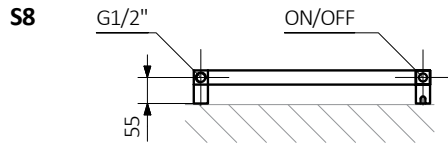
A ↓	B ↔	75.65.20°C [W]	55.45.20°C [W]	☺ [W]	D [mm]	E [mm]	F [mm]	H [dm³]	📦 [kg]	Product Code ▶ Configuration codes: 3
480	500	173	100	200	470	240	120	1,89	3,72	WZSIE048050
600	500	217	123	200	470	360	120	2,38	4,58	WZSIE060050
720	500	262	145	300	470	480	120	2,87	5,45	WZSIE072050
840	500	306	167	300	470	600	120	3,36	6,32	WZSIE084050
960	500	351	189	400	470	720	120	3,85	7,19	WZSIE096050
1080	500	396	211	400	470	840	120	4,34	8,06	WZSIE108050
1200	500	440	234	400	470	960	120	4,83	8,93	WZSIE120050
1440	500	529	271	600	470	1200	120	5,81	10,67	WZSIE144050
1680	500	618	308	600	470	1440	120	6,79	12,40	WZSIE168050
1920	500	707	343	800	470	1680	120	7,78	14,14	WZSIE192050

Simple One

The radiator has a built-in ONE heating element.

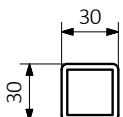


Colour included in the price



A — Height B — Width C1-C5 — Distance between pipe centres D — Horizontal distance between mounting bracket centres
E — Vertical distance between mounting brackets F — Distance between a mounting bracket and the bottom of the radiator

Profile:





Colour included
in the price

Product codes can be found in product data sheet tables. The codes provide some basic information about the product while a partially filled configuration code contains complementary information about the detailed specifications. When placing an order, product codes should include the fully completed configuration part. The configuration code part should be placed after the main product code. The main product code and configuration part will appear as shown in the example below:

The Construction of the product and configuration code for a radiator with the built-in heating element ONE

WWBNN076050

K916E1W

PRODUCT CODE
(located in the table for the product)

CONFIGURATION CODE
(supplemented by hand)

Configuration

K 916 E1 P

Package code Colour code Connection code Type of heating element cable code
K – carton box

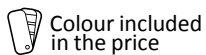
Zinc powder primer

C – Code of zinc powder primer is an extra processes

WLAL054030 K916SX **C** — *Extra processes or additions code*

Simple One

The radiator has a built-in ONE heating element.



Legend



Available in chrome finish.



Radiator available in a "water" version.



Radiator suitable for dual fuel connection. Electric heating element can be installed.



Radiator available in electric only version. It comes prefilled with a 'heating medium' and equipped with a heating element. All tested and ready to use.



Connection types dedicated for this radiator.

The icon shows the flow and return connections for the radiator as well as the thermostat valve and heating element position if applicable.



Optional connections available for this radiator.



Suggested heating element power output for electric and dual fuel versions.



Weight.



Capacity.