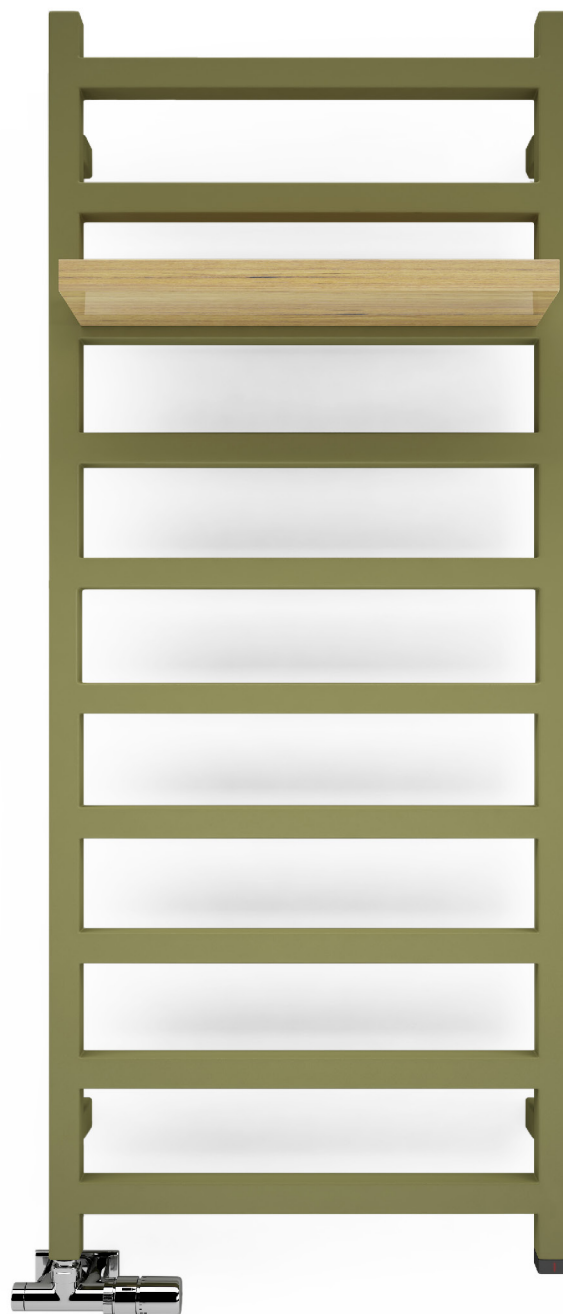


Simple



Colour included
in the price



Simple ONE 1200 x 500
colour: RAL 6013

Integrated thermostatic valve with immersion tube, angled, left, chrome
ONE heating element, integrated
SIMPLE shelf

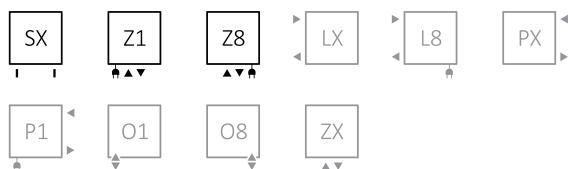


Colour included in the price

design: Przemysław Jan Majchrzak

Connections:

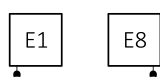
A ↓ 480÷1920:



A ↓ 720÷1920:



Electric radiators:

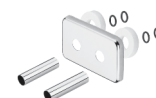


We recommend:

A set of integrated thermostatic valves for Z1 and Z8 connections



Integrated pipe-masking set



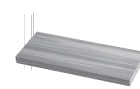
REG 3 heating element



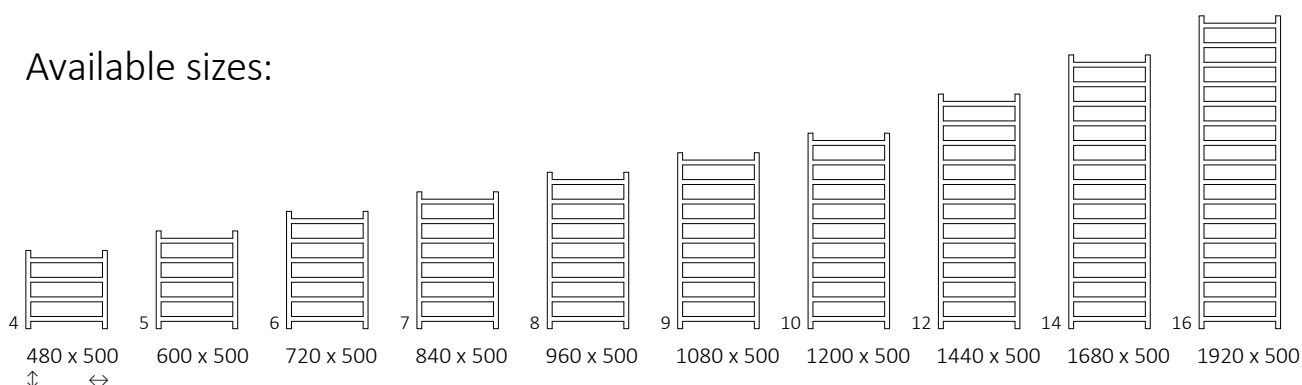
SIMPLE hanger



SIMPLE shelf



Available sizes:



Specifications:

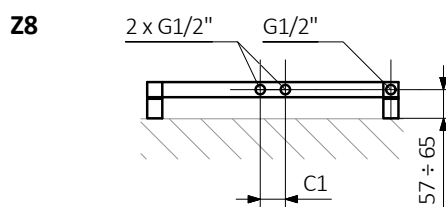
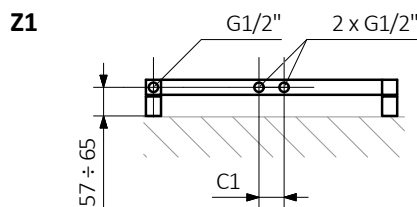
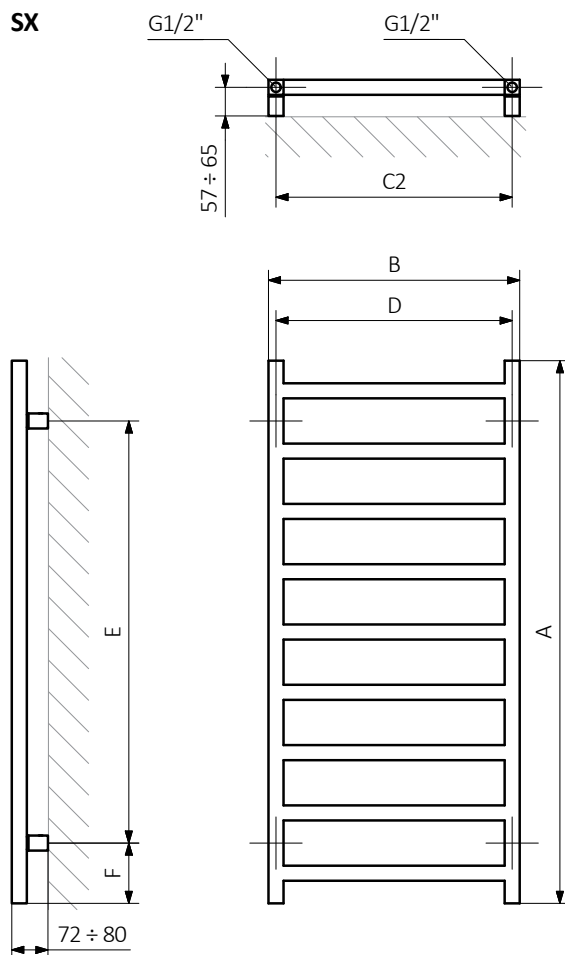
Working pressure: 1,0 MPa Maximum operating temperature: 95°C

A ↓	B ↔	C1 [mm]	C2 [mm]	75/65/20°C [W]	55/45/20°C [W]	☺ [W]	D [mm]	E [mm]	F [mm]	U [dm³]	W [kg]	Product Code <small>Configuration codes: 4</small>
480	500	50	470	173	100	200	470	240	120	1,96	3,72	WGSIM048050
600	500	50	470	217	123	200	470	360	120	2,45	4,58	WGSIM060050
720	500	50	470	262	145	300	470	480	120	2,94	5,45	WGSIM072050
840	500	50	470	306	167	300	470	600	120	3,43	6,32	WGSIM084050
960	500	50	470	351	189	400	470	720	120	3,92	7,19	WGSIM096050
1080	500	50	470	396	211	400	470	840	120	4,41	8,06	WGSIM108050
1200	500	50	470	440	234	400	470	960	120	4,90	8,93	WGSIM120050
1440	500	50	470	529	271	600	470	1200	120	5,89	10,67	WGSIM144050
1680	500	50	470	618	308	600	470	1440	120	6,87	12,40	WGSIM168050
1920	500	50	470	707	343	800	470	1680	120	7,85	14,14	WGSIM192050

Simple

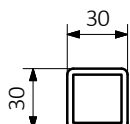


Colour included
in the price



A — Height B — Width C1-C5 — Distance between pipe centres D — Horizontal distance between mounting bracket centres
E — Vertical distance between mounting brackets F — Distance between a mounting bracket and the bottom of the radiator

Profile:





Product codes can be found in product data sheet tables. The codes provide some basic information about the product while a partially filled configuration code contains complementary information about the detailed specifications. When placing an order, product codes should include the fully completed configuration part. The configuration code part should be placed after the main product code. The main product code and configuration part will appear as shown in the example below:

The construction of a water and dual fuel radiator product and configuration code:

WGALE054030

K916SX

PRODUCT CODE
(located in the table for the product)

CONFIGURATION CODE
(supplemented by hand)

Configuration

K 916 SX

Package code Colour code Connection code
K – carton box

Construction of electric heater configuration code

WLALE054030

K916E1DRYM

PRODUCT CODE
(located in the table for the product)

CONFIGURATION CODE
(supplemented by hand)

Configuration

K 916 E1 DRY M

Package code Colour code Connection code Heating element code Type of heating element cable code
K – carton box

Zinc powder primer

C – Code of zinc powder primer is an extra processes

WLALE054030 K916SX **C** – *Extra processes or additions code*



Colour included
in the price

Legend



Available in chrome finish.



Radiator available in a "water" version.



Radiator suitable for dual fuel connection. Electric heating element can be installed.



Radiator available in electric only version. It comes prefilled with a 'heating medium' and equipped with a heating element. All tested and ready to use.



Connection types dedicated for this radiator.
The icon shows the flow and return connections for the radiator as well as the thermostat and heating element position if applicable.



Optional connections available for this radiator.



Suggested heating element power output for electric and dual fuel versions.



Weight.



Capacity.