

Fiona



Fiona 1620 x 530
colour: RAL 8024

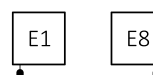
Integrated thermostatic valve with immersion tube, angled, right, chrome
SLIM thermostatic head, chrome
Integrated pipe-masking set, chrome



Connections:



Electric radiators:



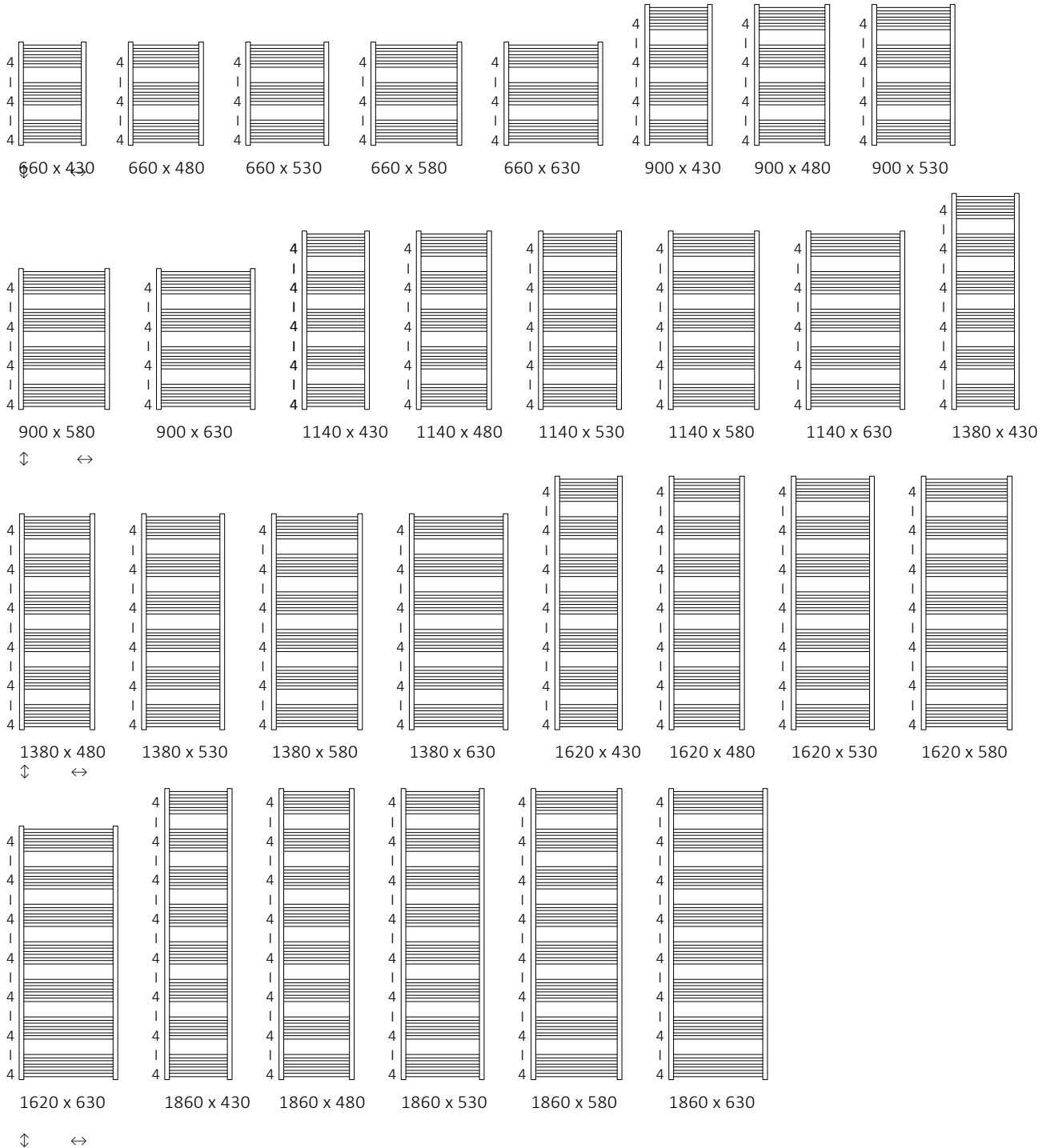
Specification:

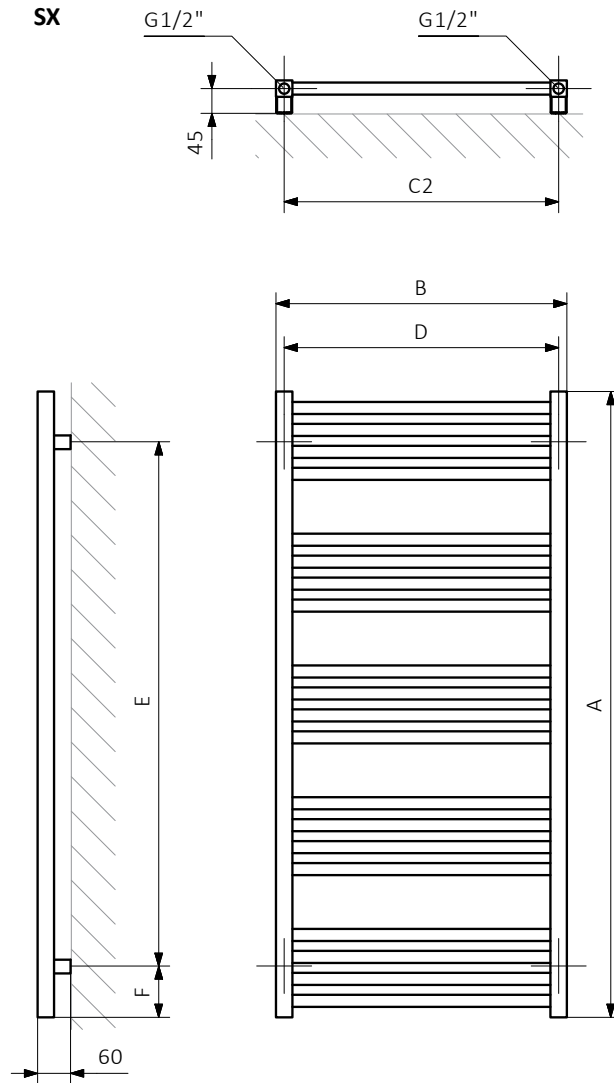
Working pressure: 1,0 MPa Maximum operating temperature: 95°C

A ↓	B ↔	C2 [mm]	75/65/20°C [W]	55/45/20°C [W]	[W]	D [mm]	E [mm]	F [mm]	H [dm³]	[kg]	Product code <small>Configuration codes: 5</small>
660	430	400	255	136	300	400	475	94	2,29	4,54	WGFIN066043
660	480	450	280	149	300	450	475	94	2,46	4,92	WGFIN066048
660	530	500	304	162	300	500	475	94	2,64	5,30	WGFIN066053
660	580	550	327	175	300	550	475	94	2,82	5,69	WGFIN066058
660	630	600	350	188	400	600	475	94	3,00	6,07	WGFIN066063
900	430	400	342	182	400	400	715	94	3,08	6,08	WGFIN090043
900	480	450	375	200	400	450	715	94	3,32	6,59	WGFIN090048
900	530	500	407	217	400	500	715	94	3,55	7,10	WGFIN090053
900	580	550	438	234	400	550	715	94	3,79	7,61	WGFIN090058
900	630	600	469	251	400	600	715	94	4,03	8,13	WGFIN090063
1140	430	400	430	228	400	400	955	94	3,87	7,62	WGFIN114043
1140	480	450	471	250	400	450	955	94	4,17	8,26	WGFIN114048
1140	530	500	511	272	600	500	955	94	4,47	8,90	WGFIN114053
1140	580	550	550	293	600	550	955	94	4,76	9,54	WGFIN114058
1140	630	600	589	314	600	600	955	94	5,06	10,18	WGFIN114063
1380	430	400	518	275	600	400	1195	94	4,66	9,16	WGFIN138043
1380	480	450	568	301	600	450	1195	94	5,02	9,93	WGFIN138048
1380	530	500	616	327	600	500	1195	94	5,38	10,70	WGFIN138053
1380	580	550	664	352	600	550	1195	94	5,73	11,47	WGFIN138058
1380	630	600	711	378	800	600	1195	94	6,09	12,23	WGFIN138063
1620	430	400	608	322	600	400	1435	94	5,45	10,70	WGFIN162043
1620	480	450	666	353	600	450	1435	94	5,87	11,60	WGFIN162048
1620	530	500	723	383	800	500	1435	94	6,29	12,49	WGFIN162053
1620	580	550	779	413	800	550	1435	94	6,70	13,39	WGFIN162058
1620	630	600	834	442	800	600	1435	94	7,12	14,29	WGFIN162063
1860	430	400	700	370	800	400	1675	94	6,24	12,24	WGFIN186043
1860	480	450	767	405	800	450	1675	94	6,72	13,27	WGFIN186048
1860	530	500	832	440	800	500	1675	94	7,20	14,29	WGFIN186053
1860	580	550	897	474	1000	550	1675	94	7,67	15,32	WGFIN186058
1860	630	600	960	507	1000	600	1675	94	8,15	16,34	WGFIN186063



Available sizes:

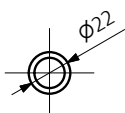
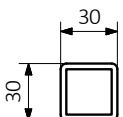




A – height B – width C1-C5 – Distance between pipe centres D – Horizontal distance between mounting bracket centres
 E – Vertical distance between mounting brackets F – Distance between mounting bracket and the bottom of the radiator

Collector:

Profile:





Product codes can be found in product data sheet tables. The codes provide some basic information about the product while a partially filled configuration code contains complementary information about the detailed specifications. When placing an order, product codes should include the fully completed configuration part. The configuration code part should be placed after the main product code. The main product code and configuration part will appear as shown in the example below:

The construction of a water and dual fuel radiator product and configuration code:

WGALE054030

PRODUCT CODE
(located in the table for the product)

K916SX

CONFIGURATION CODE
(supplemented by hand)

Configuration

K 916 SX

Package code Colour code Connection code
K – carton box

Construction of electric heater configuration code

WLALE054030

PRODUCT CODE
(located in the table for the product)

K916E1DRYM

CONFIGURATION CODE
(supplemented by hand)

Configuration

K 916 E1 DRY M

Package code Colour code Connection code Heating element code Type of heating element cable code
K – carton box

Zinc powder primer

C – Code of zinc powder primer is an extra processes

WLALE054030 K916SX **C** – *Extra processes or additions code*



Legend



Available in chrome finish.



Radiator available in a “water” version.



Radiator suitable for dual fuel connection. Electric heating element can be installed.



Radiator available in electric only version. It comes prefilled with a ‘heating medium’ and equipped with a heating element. All tested and ready to use.



Connection types dedicated for this radiator.
The icon shows the flow and return connections for the radiator as well as the thermostat valve and heating element position if applicable.



Optional connections available for this radiator.



Suggested heating element power output for electric and dual fuel versions.



Weight.



Capacity.