

# Domi



  
**TERMA**  
SINCE 1990



Domi 1116 x 500  
colour: chrom

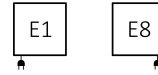
Integrated thermostatic valve with immersion tube, angled, right, chrome  
SLIM thermostatic head, chrome  
Integrated pipe-masking set, chrome  
REG 3 heating element, chrom



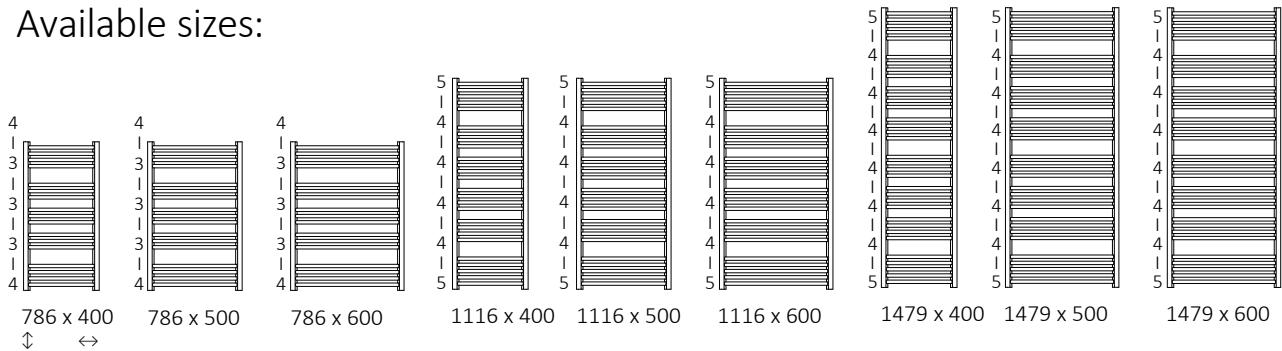
## Connections:



## Electric radiators:



## Available sizes:



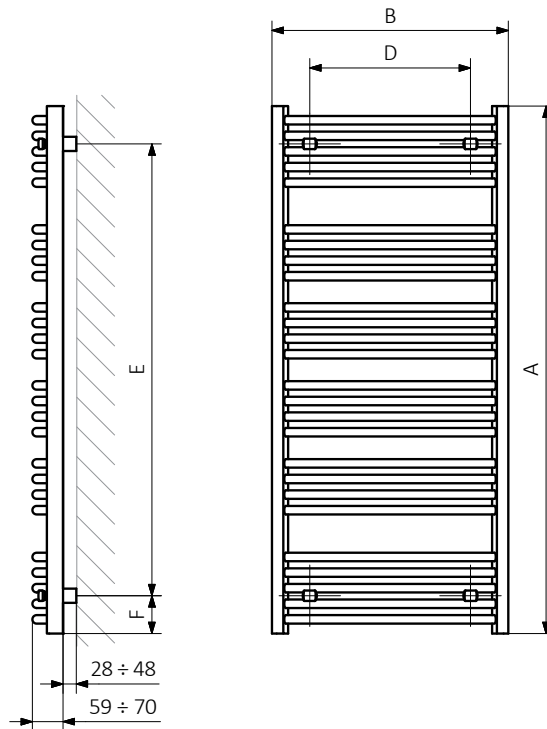
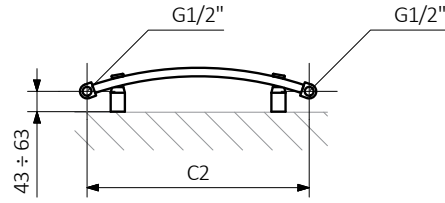
## Specifications:

Working pressure: 1,0 MPa    Maximum operating temperature: 95°C

A ↓	B ↔	C2 [mm]	75/65/20°C [W]	55/45/20°C [W]	[W]	D [mm]	E [mm]	F [mm]	[dm³]	[kg]	Product Code <a href="#">Configuration codes.4</a>
<b>Powder coating</b>											
786	400	370	296	161	300	240	626	80	2,13	4,58	WGDOM078040
786	500	470	369	199	400	340	626	80	2,54	5,45	WGDOM078050
786	600	570	435	235	400	440	626	80	2,86	6,33	WGDOM078060
1116	400	370	413	222	400	240	956	80	3,27	6,79	WGDOM111040
1116	500	470	513	274	600	340	956	80	3,76	8,14	WGDOM111050
1116	600	570	620	331	600	440	956	80	4,25	9,48	WGDOM111060
1479	400	370	533	284	600	240	1319	80	4,31	8,90	WGDOM147040
1479	500	470	663	346	600	340	1319	80	4,95	10,66	WGDOM147050
1479	600	570	800	425	800	440	1319	80	5,59	12,42	WGDOM147060
<b>Plated finishes</b>											
786	400	370	207	106	200	240	626	80	2,13	4,58	WGDOM078040
786	500	470	258	132	300	340	626	80	2,54	5,45	WGDOM078050
786	600	570	305	155	300	440	626	80	2,86	6,33	WGDOM078060
1116	400	370	289	147	300	240	956	80	3,27	6,79	WGDOM111040
1116	500	470	359	183	400	340	956	80	3,76	8,14	WGDOM111050
1116	600	570	434	221	400	440	956	80	4,25	9,48	WGDOM111060
1479	400	370	373	190	400	240	1319	80	4,31	8,90	WGDOM147040
1479	500	470	464	237	400	340	1319	80	4,95	10,66	WGDOM147050
1479	600	570	560	286	600	440	1319	80	5,59	12,42	WGDOM147060



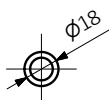
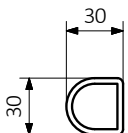
SX



A — Height B — Width C1-C5 — Distance between pipe centres D — Horizontal distance between mounting bracket centres  
 E — Vertical distance between mounting brackets F — Distance between a mounting bracket and the bottom of the radiator

**Collector:**

**Profile:**





Product codes can be found in product data sheet tables. The codes provide some basic information about the product while a partially filled configuration code contains complementary information about the detailed specifications. When placing an order, product codes should include the fully completed configuration part. The configuration code part should be placed after the main product code. The main product code and configuration part will appear as shown in the example below:

The construction of a water and dual fuel radiator product and configuration code:

WGALE054030

K916SX

PRODUCT CODE  
(located in the table for the product)

CONFIGURATION CODE  
(supplemented by hand)

Configuration

K 916 SX

Package code   Colour code   Connection code  
*K – carton box*

Construction of electric heater configuration code

WLALE054030

K916E1DRYM

PRODUCT CODE  
(located in the table for the product)

CONFIGURATION CODE  
(supplemented by hand)

Configuration

K 916 E1 DRY M

Package code   Colour code   Connection code   Heating element code   Type of heating element cable code  
*K – carton box*

Zinc powder primer

**C** – Code of zinc powder primer is an extra processes

WLALE054030 K916SX **C** – *Extra processes or additions code*



## Legend



Available in chrome finish.



Radiator available in a "water" version.



Radiator suitable for dual fuel connection. Electric heating element can be installed.



Radiator available in electric only version. It comes prefilled with a 'heating medium' and equipped with a heating element. All tested and ready to use.



Connection types dedicated for this radiator.

The icon shows the flow and return connections for the radiator as well as the thermostatic valve and heating element position if applicable.



Optional connections available for this radiator.



Suggested heating element power output for electric and dual fuel versions.



Weight.



Capacity.