

Tune VWD E

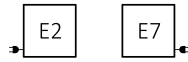


Colour included
in the price

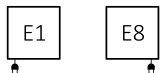
design: *Terma*

Connections:

A ↓ 600:



A ↓ 1800:






We recommend:

MOA heating element



Specifications:

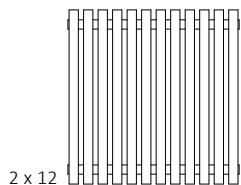
A ↓	B ↔	 [W]	D [mm]	E [mm]	F [mm]	 [dm ³]	 [kg]	Product Code <small>Configuration codes: 5</small>
600	590	800	490	500	50	10,72	23,77	WLTUV060059
600	790	1000	690	500	50	14,30	31,67	WLTUV060079
600	990	1200	890	500	50	17,87	39,56	WLTUV060099
600	1190	1500	1090	500	50	21,45	47,46	WLTUV060119
600	1390	1500	1290	500	50	25,03	55,36	WLTUV060139
1800	290	1000	190	1600	50	15,26	33,17	WLTUV180029
1800	490	1500	390	1600	50	25,44	55,17	WLTUV180049

Tune VWD E



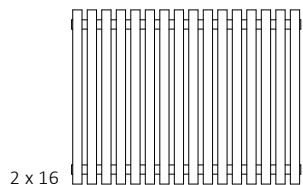
Colour included
in the price

Available sizes:



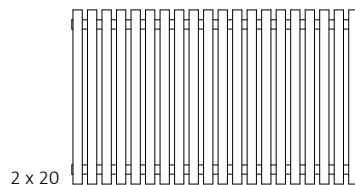
2 x 12

600 x 590



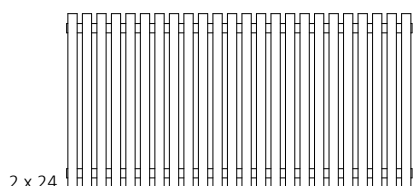
2 x 16

600 x 790



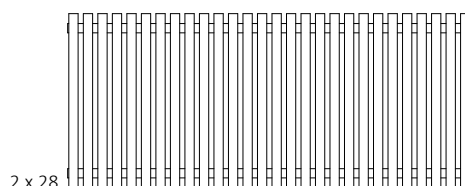
2 x 20

600 x 990



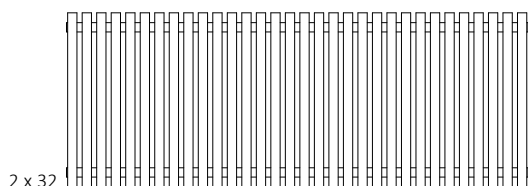
2 x 24

600 x 1190



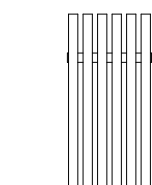
2 x 28

600 x 1390



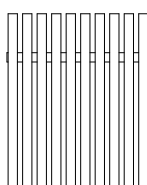
2 x 32

600 x 1590



2 x 6

1800 x 290



2 x 10

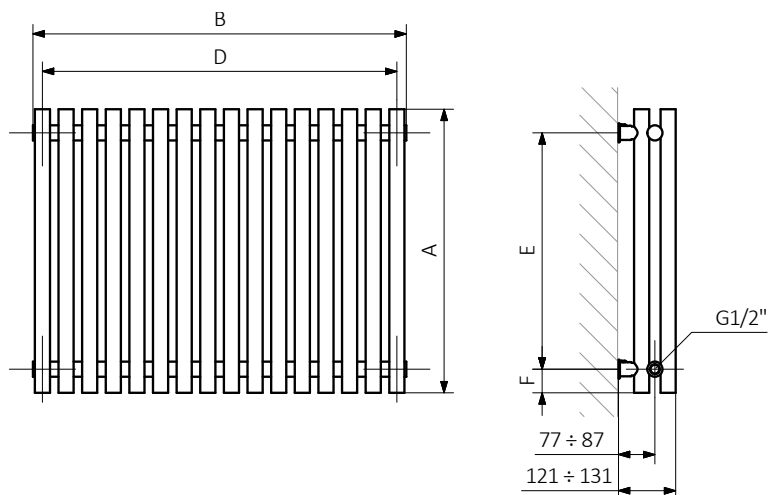
1800 x 490

Tune VWD E

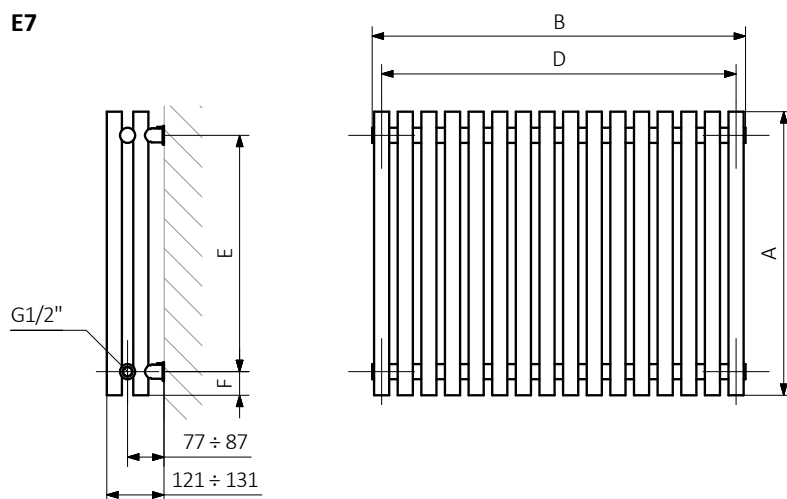


Colour included
in the price

E2

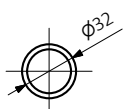


E7



A — Height B — Width C1-C5 — Distance between pipe centres D — Horizontal distance between mounting bracket centres
E — Vertical distance between mounting brackets F — Distance between a mounting bracket and the bottom of the radiator

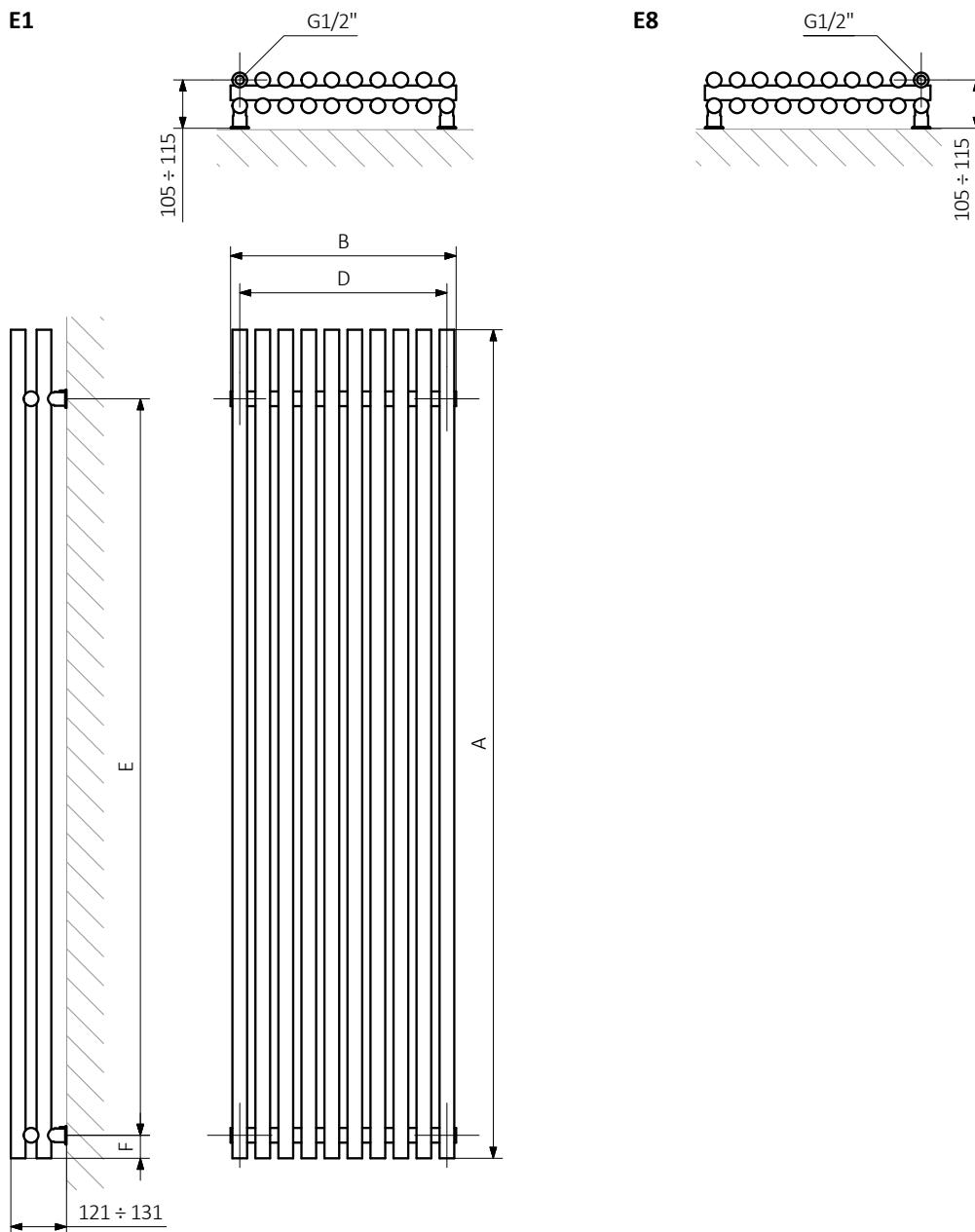
Profile:



Tune VWD E

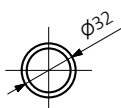


Colour included
in the price



A — Height B — Width C1-C5 — Distance between pipe centres D — Horizontal distance between mounting bracket centres
E — Vertical distance between mounting brackets F — Distance between a mounting bracket and the bottom of the radiator

Profile:





Colour included
in the price

Product codes can be found in product data sheet tables. The codes provide some basic information about the product while a partially filled configuration code contains complementary information about the detailed specifications. When placing an order, product codes should include the fully completed configuration part. The configuration code part should be placed after the main product code. The main product code and configuration part will appear as shown in the example below:

Construction of electric heater configuration code

WLALE054030

K916E1DRYM

PRODUCT CODE

(located in the table for the product)

CONFIGURATION CODE

(supplemented by hand)

Configuration

K 916 E1 DRY M

Package code Colour code Connection code Heating element code Type of heating element cable code

K – carton box

Zinc powder primer

C – Code of zinc powder primer is an extra processes

WLALE054030 K916SX **C** — *Extra processes or additions code*



Legend



Available in chrome finish.



Radiator available in a "water" version.



Radiator suitable for dual fuel connection. Electric heating element can be installed.



Radiator available in electric only version. It comes prefilled with a 'heating medium' and equipped with a heating element. All tested and ready to use.



Connection types dedicated for this radiator.
The icon shows the flow and return connections for the radiator as well as the thermostatic valve and heating element position if applicable.



Optional connections available for this radiator.



Suggested heating element power output for electric and dual fuel versions.



Weight.



Capacity.