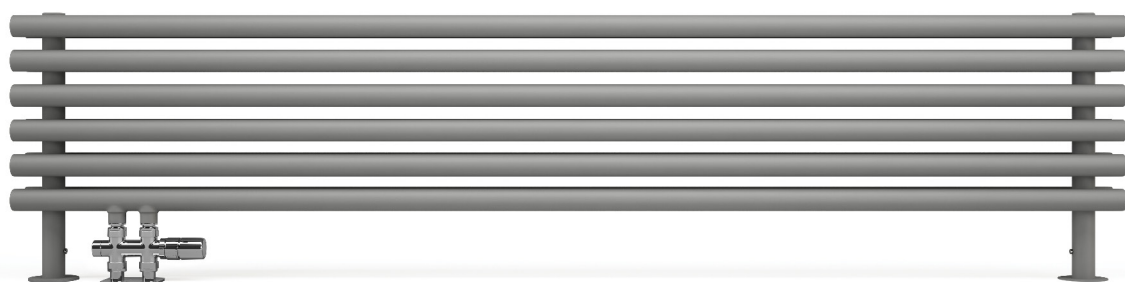


Tune HSD



Colour included
in the price



Tune HSD 390 x 1400
colour: nickel matt

Integrated thermostatic valve, straight, left, chrome
SLIM thermostatic head, chrome
Integrated pipe-masking set, chrome



Connections:

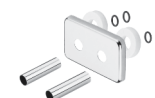


We recommend:

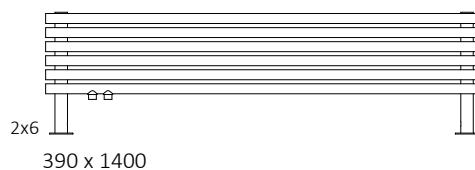
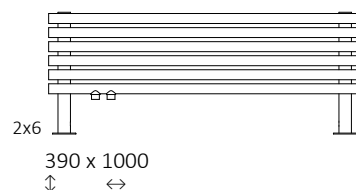
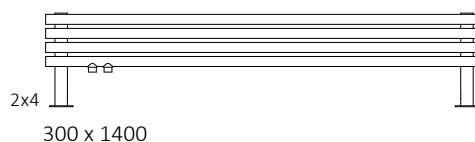
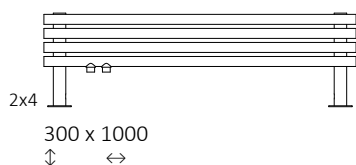
A set of integrated thermostatic valves for YL and YP connections



Integrated pipe-masking set



Available sizes:



Specifications:

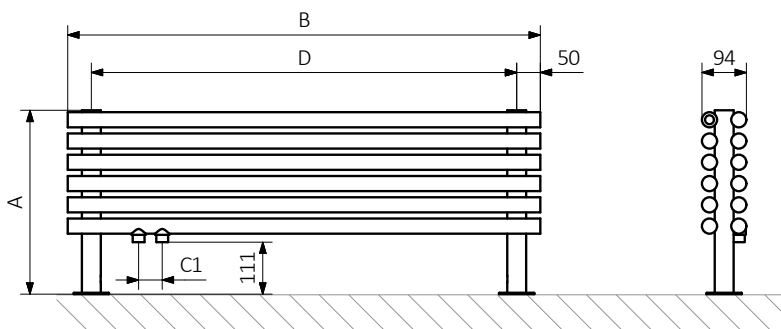
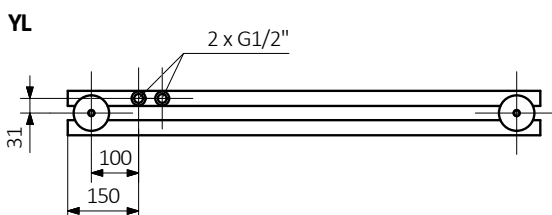
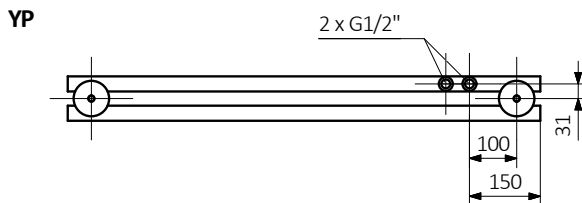
Working pressure: 1,0 MPa Maximum operating temperature: 95°C

A ↓	B ↔	C1 [mm]	75/65/20°C [W]	55/45/20°C [W]	D [mm]	 [dm ³]	 [kg]	Product Code <small>Configuration codes.4</small>
300	1000	50	421	229	900	6,11	8,94	WGTUH030100
300	1400	50	589	320	1300	8,32	11,85	WGTUH030140
390	1000	50	564	305	900	9,05	13,05	WGTUH039100
390	1400	50	790	428	1300	12,35	17,42	WGTUH039140

Tune HSD



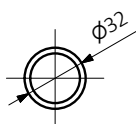
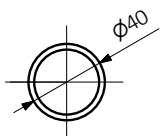
Colour included
in the price



A — Height B — Width C1-C5 — Distance between pipe centres D — Horizontal distance between mounting bracket centres
E — Vertical distance between mounting brackets F — Distance between a mounting bracket and the bottom of the radiator

Collector:

Profile:





Product codes can be found in product data sheet tables. The codes provide some basic information about the product while a partially filled configuration code contains complementary information about the detailed specifications. When placing an order, product codes should include the fully completed configuration part. The configuration code part should be placed after the main product code. The main product code and configuration part will appear as shown in the example below:

The construction of a water and dual fuel radiator product and configuration code:

WGALE054030

K916SX

PRODUCT CODE
(located in the table for the product)

CONFIGURATION CODE
(supplemented by hand)

Configuration

K 916 SX

Package code Colour code Connection code
K – carton box

Zinc powder primer

C – Code of zinc powder primer is an extra processes

WLALE054030 K916SX **C** — *Extra processes or additions code*



Colour included
in the price

Legend



Available in chrome finish.



Radiator available in a "water" version.



Radiator suitable for dual fuel connection. Electric heating element can be installed.



Radiator available in electric only version. It comes prefilled with a 'heating medium' and equipped with a heating element. All tested and ready to use.



Connection types dedicated for this radiator.
The icon shows the flow and return connections for the radiator as well as the thermostat valve and heating element position if applicable.



Optional connections available for this radiator.



Suggested heating element power output for electric and dual fuel versions.



Weight.



Capacity.