

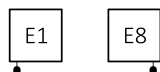
Triga M E



Colour included
in the price

design: *Terma*

Connections:



We recommend:

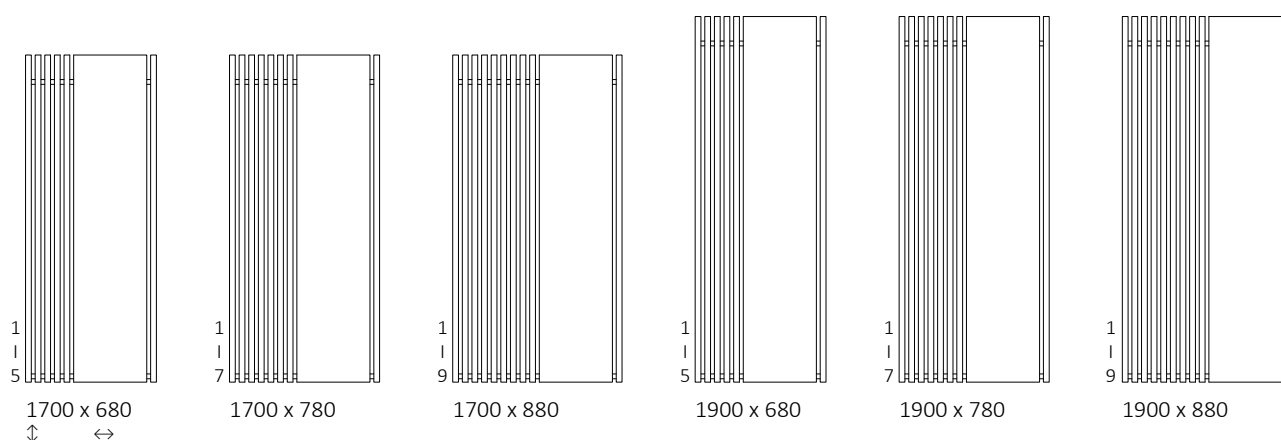
ZIP V hanger






ONE heating element



Available sizes:



Specifications:

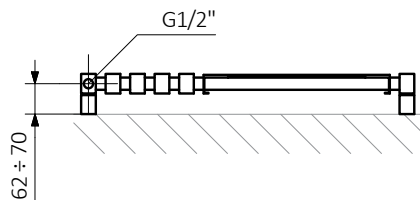
A ↓	B ↔	 [W]	D [mm]	E [mm]	F [mm]	 [dm ³]	 [kg]	Product Code <small>Configuration codes: 3</small>
1700	680	600	650	1520	90	10,55	36,80	WLTRL170068
1700	780	800	750	1520	90	13,97	45,06	WLTRL170078
1700	880	1000	850	1520	90	17,39	53,32	WLTRL170088
1900	680	800	650	1720	90	11,75	40,95	WLTRL190068
1900	780	1000	750	1720	90	15,57	50,14	WLTRL190078
1900	880	1200	850	1720	90	19,39	59,34	WLTRL190088

Triga M E

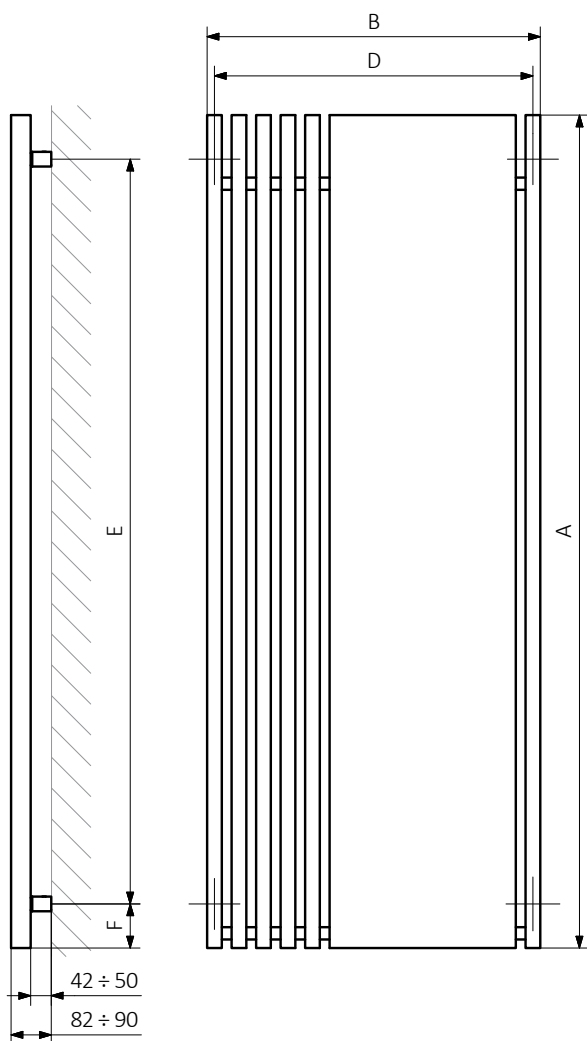
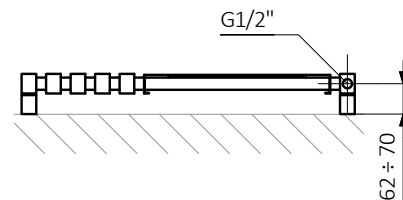


Colour included in the price

E1

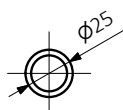


E8

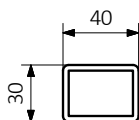


A — Height B — Width C1-C5 — Distance between pipe centres D — Horizontal distance between mounting bracket centres
E — Vertical distance between mounting brackets F — Distance between a mounting bracket and the bottom of the radiator

Collector:



Profile:





Colour included
in the price

Product codes can be found in product data sheet tables. The codes provide some basic information about the product while a partially filled configuration code contains complementary information about the detailed specifications. When placing an order, product codes should include the fully completed configuration part. The configuration code part should be placed after the main product code. The main product code and configuration part will appear as shown in the example below:

Construction of electric heater configuration code

WLALE054030

K916E1DRYM

PRODUCT CODE

(located in the table for the product)

CONFIGURATION CODE

(supplemented by hand)

Configuration

K 916 E1 DRY M

Package code Colour code Connection code Heating element code Type of heating element cable code

K – carton box

Zinc powder primer

C – Code of zinc powder primer is an extra processes

WLALE054030 K916SX **C** — *Extra processes or additions code*



Colour included
in the price

Legend



Available in chrome finish.



Radiator available in a "water" version.



Radiator suitable for dual fuel connection. Electric heating element can be installed.



Radiator available in electric only version. It comes prefilled with a 'heating medium' and equipped with a heating element. All tested and ready to use.



Connection types dedicated for this radiator.
The icon shows the flow and return connections for the radiator as well as the thermostatic valve and heating element position if applicable.



Optional connections available for this radiator.



Suggested heating element power output for electric and dual fuel versions.



Weight.



Capacity.