

# Triga AN



Colour included  
in the price



Triga AN 1700 x 280  
colour: RAL 7003

Integrated thermostatic valve, angled, left, chrome  
SLIM thermostatic head, chrome  
Integrated pipe-masking set, chrome

# Triga AN



Colour included  
in the price

design: *Terma*

## Connections:

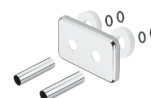


## We recommend:

A set of integrated thermostatic valves  
for ZX connection



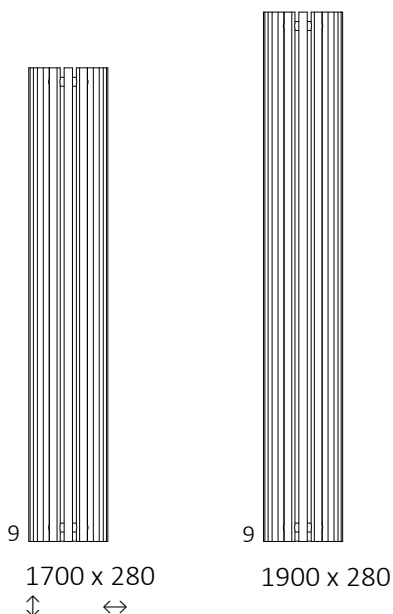
Integrated  
pipe-masking set



ZIP V hanger


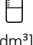



## Available sizes:



## Specifications:

Working pressure: 1,0 MPa    Maximum operating temperature: 95°C

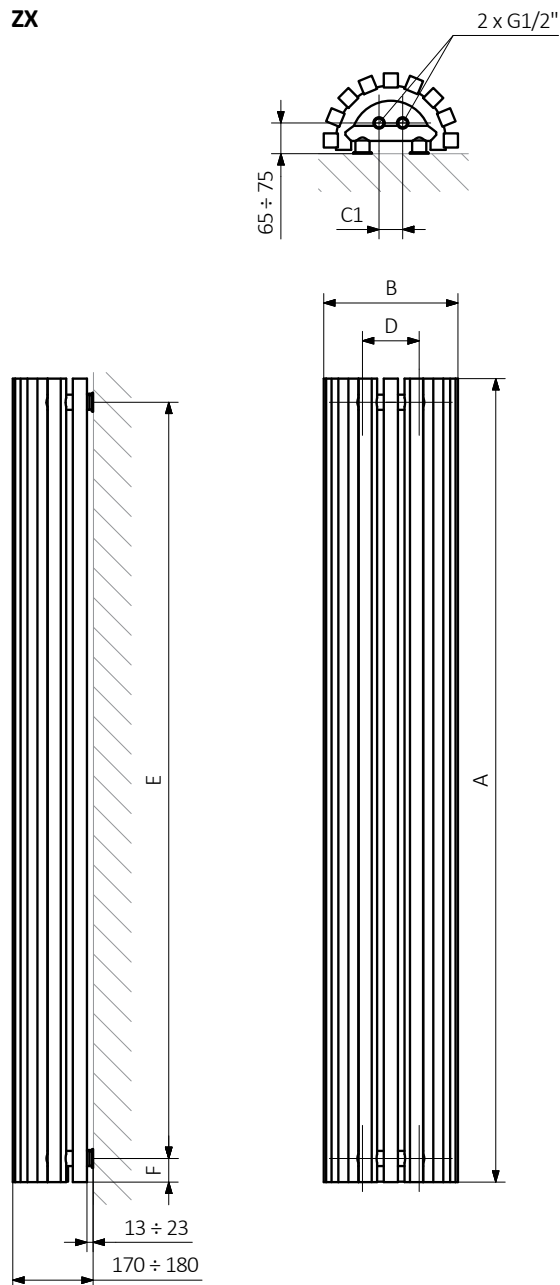
A ↓	B ↔	C1 [mm]	75/65/20°C [W]	55/45/20°C [W]	 [W]	D [mm]	E [mm]	F [mm]	 [dm <sup>3</sup> ]	 [kg]	Product Code <small>Configuration codes: 4</small>
1700	280	50	953	492	1000	120	1600	50	11,64	21,86	WGVER170028
1900	280	50	1053	548	1000	120	1800	50	12,95	24,19	WGVER190028

# Triga AN



Colour included  
in the price

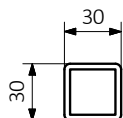
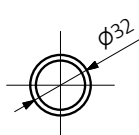
ZX



A — Height B — Width C1-C5 — Distance between pipe centres D — Horizontal distance between mounting bracket centres  
E — Vertical distance between mounting brackets F — Distance between a mounting bracket and the bottom of the radiator

**Collector:**

**Profile:**





Colour included  
in the price

Product codes can be found in product data sheet tables. The codes provide some basic information about the product while a partially filled configuration code contains complementary information about the detailed specifications. When placing an order, product codes should include the fully completed configuration part. The configuration code part should be placed after the main product code. The main product code and configuration part will appear as shown in the example below:

The construction of a water radiator product and configuration code:

WGALE054030

PRODUCT CODE  
(located in the table for the product)

K916SX

CONFIGURATION CODE  
(supplemented by hand)

Configuration

K 916 SX

Package code   Colour code   Connection code  
*K – carton box*

Zinc powder primer

**C** – Code of zinc powder primer is an extra processes

WLALE054030 K916SX **C** — *Extra processes or additions code*

# Triga AN



Colour included  
in the price

## Legend



Available in chrome finish.



Radiator available in a “water” version.



Radiator suitable for dual fuel connection. Electric heating element can be installed.



Radiator available in electric only version. It comes prefilled with a ‘heating medium’ and equipped with a heating element. All tested and ready to use.



Connection types dedicated for this radiator.

The icon shows the flow and return connections for the radiator as well as the thermostat valve and heating element position if applicable.



Optional connections available for this radiator.



Suggested heating element power output for electric and dual fuel versions.



Weight.



Capacity.