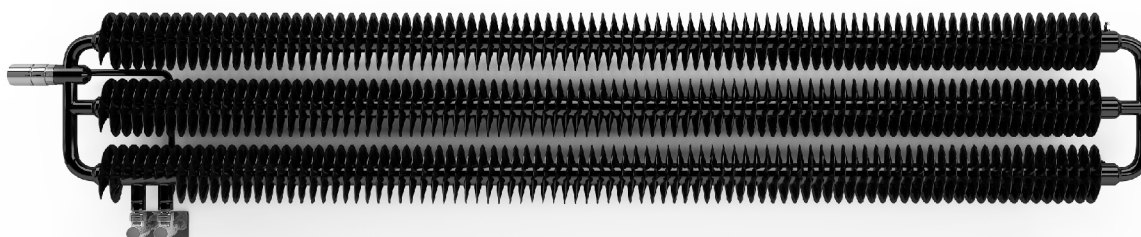


Ribbon HWS



Colour included
in the price



Ribbon HWS 290 X 1740
colour: RAL 9005

2 x Straight lockshield valve, chrome
SLIM thermostatic head, chrome
Integrated pipe-masking set, chrome

Ribbon HWS



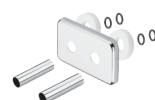
design: Terma

Connections:



We recommend:

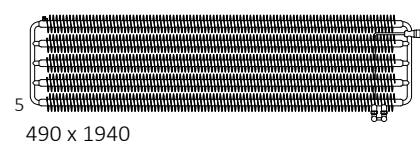
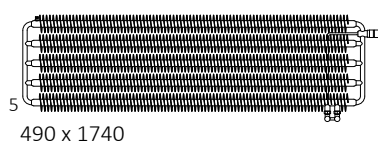
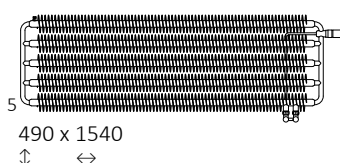
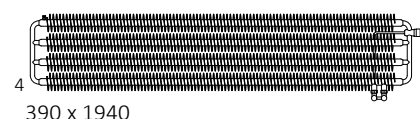
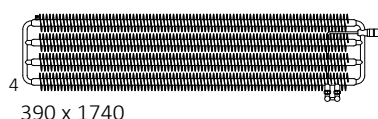
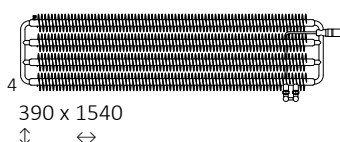
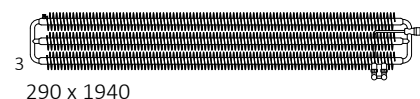
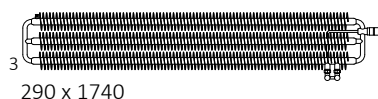
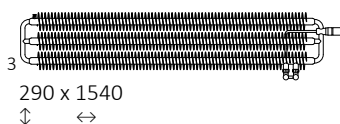
Integrated pipe-masking set



Zinc primer



Available sizes:



Specifications:

Working pressure: 1,0 MPa Maximum operating temperature: 95°C

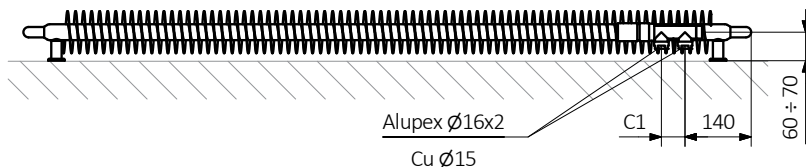
A ↓	B ↔	C1 [mm]	75/65/20°C [W]	55/45/20°C [W]	D [mm]	E [mm]	F [mm]	U [dm³]	W [kg]	Product Code <small>Configuration codes: 4</small>
290	1540	50	802	411	1400	200	43	2,90	22,89	WGHWS029154
290	1740	50	906	464	1600	200	43	3,27	25,87	WGHWS029174
290	1940	50	1010	517	1800	200	43	3,64	28,86	WGHWS029194
390	1540	50	990	504	1400	300	43	3,78	29,99	WGHWS039154
390	1740	50	1119	570	1600	300	43	4,26	33,97	WGHWS039174
390	1940	50	1248	636	1800	300	43	4,75	37,95	WGHWS039194
490	1540	50	1329	670	1400	400	43	4,65	37,10	WGHWS049154
490	1740	50	1501	757	1600	400	43	5,26	42,07	WGHWS049174
490	1940	50	1673	844	1800	400	43	5,87	47,05	WGHWS049194

Included components: Included when purchased with YP and YL connections are an angled integrated thermostatic valve, SLIM thermostatic head and adapters for installation with Alupex Ø 16x2 and copper Ø 15 pipe. All valve components are finished in chrome. Included when purchased with VL and VP connection is an integrated, angled lockshield valve, SLIM thermostatic head and adapters for installation with Alupex Ø 16x2 and copper Ø 15 pipe. All valve components are finished in chrome.

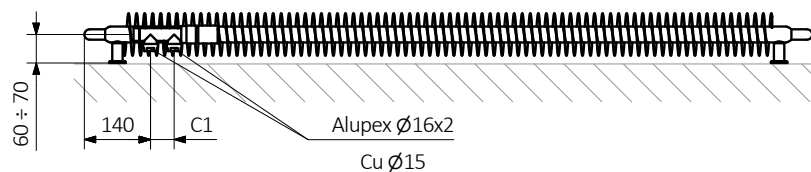
Ribbon HWS

  Colour included in the price

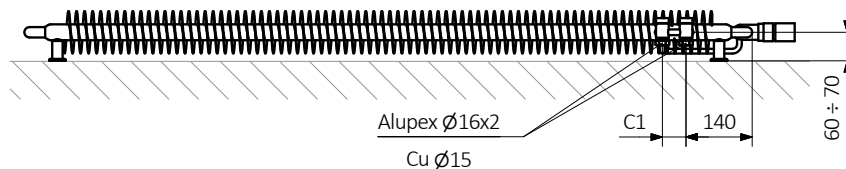
YP



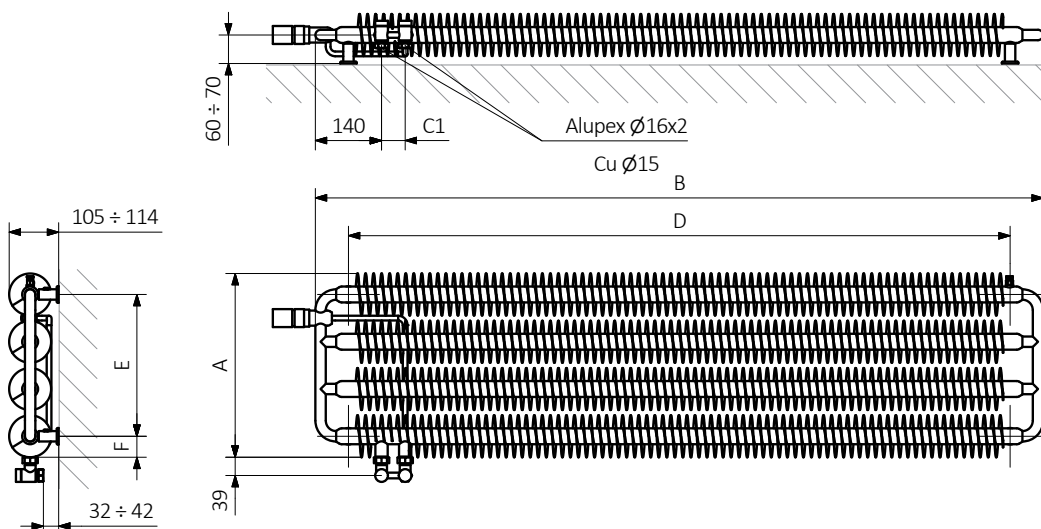
YL



VP



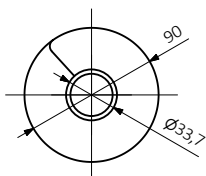
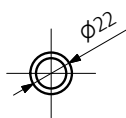
VL



A — Height B — Width C1-C5 — Distance between pipe centres D — Horizontal distance between mounting bracket centres
E — Vertical distance between mounting brackets F — Distance between a mounting bracket and the bottom of the radiator

Collector:

Profile:





Colour included
in the price

Product codes can be found in product data sheet tables. The codes provide some basic information about the product while a partially filled configuration code contains complementary information about the detailed specifications. When placing an order, product codes should include the fully completed configuration part. The configuration code part should be placed after the main product code. The main product code and configuration part will appear as shown in the example below:

The construction of a water radiator product and configuration code:

WGALE054030

K916SX

PRODUCT CODE
(located in the table for the product)

CONFIGURATION CODE
(supplemented by hand)

Configuration

K 916 SX

Package code Colour code Connection code
K – carton box

Zinc powder primer

C – Code of zinc powder primer is an extra processes

WLALE054030 K916SX **C** — *Extra processes or additions code*

Ribbon HWS



Legend



Available in chrome finish.



Radiator available in a "water" version.



Radiator suitable for dual fuel connection. Electric heating element can be installed.



Radiator available in electric only version. It comes prefilled with a 'heating medium' and equipped with a heating element. All tested and ready to use.



Connection types dedicated for this radiator.
The icon shows the flow and return connections for the radiator as well as the thermostat valve and heating element position if applicable.



Optional connections available for this radiator.



Suggested heating element power output for electric and dual fuel versions.



Weight.



Capacity.